

Gewinde- und Flanschanschlusskörper NG 10

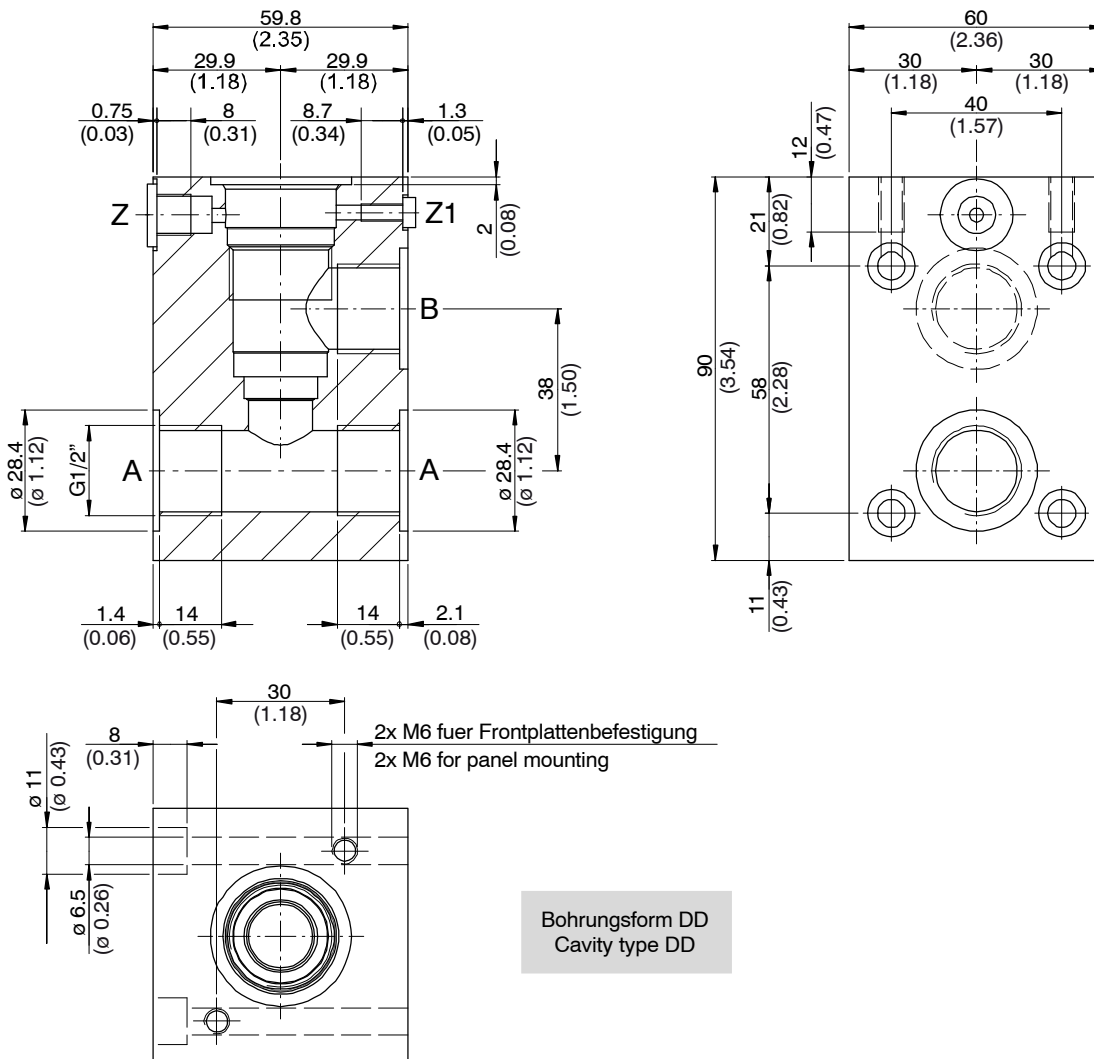
Typ DD-12

p_{max} 450 bar (250 bar bei Flanschmontage)

- Anschlüsse A und B: G 1/2"
- Werkstoff: Stahl

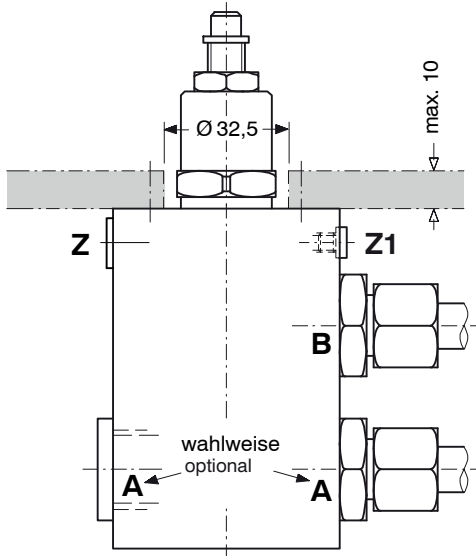
- Oberflächenschutz:
Zink-Nickel-Beschichtung
- Masse: 2,0 kg

1 Abmessungen, Schnittbild



2 Anwendungsbeispiele

Rohrleitungsmontage



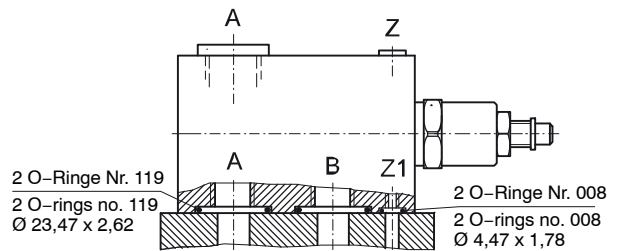
Flanschmontage



ACHTUNG!

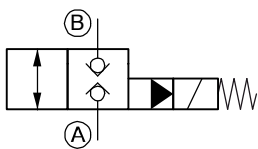
Bei Flanschmontage beträgt der maximale Betriebsdruck 250 bar. Zur Montage sind Zylinderschrauben M6/12.9 zu verwenden. Höhere Drücke auf Anfrage.

Die beiden Anschlüsse A (G1/2") und Z (G1/8") sind kundenseitig mit Verschlusschrauben zu verschliessen und die Schraube M4 in Z1 zu entfernen.

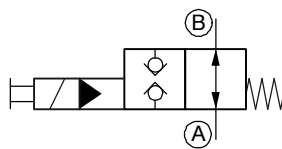


3 Einbaupatronen

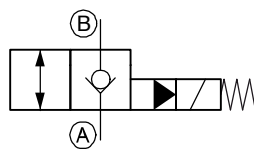
2/2-Wegepatronen (elektrisch betätigt)



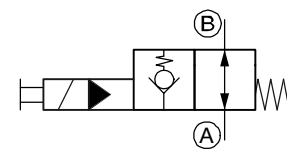
WS22GND...-10...



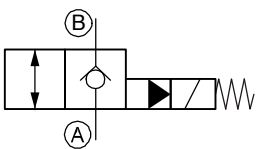
WS22OND...-10...



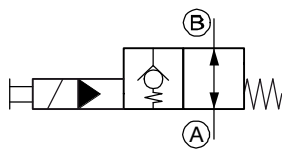
WR22GED...-10...
WR22GND...-10...



WR22OED...-10...
WR22OND...-10...

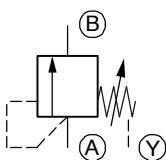


WRA22GED...-10...
WRA22GND...-10...

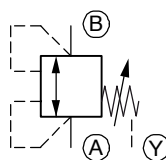


WRA22OED...-10...
WRA22OND...-10...

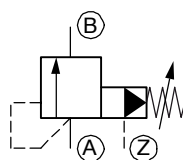
Druckpatronen (handbetätigt)



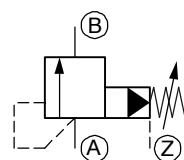
DDPB-3D-10...



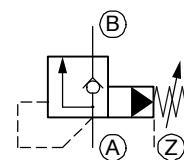
DDPDB-3D-10...



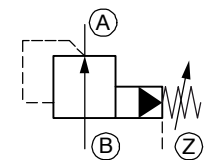
DVPA-2-10...



DVPA-3-10...

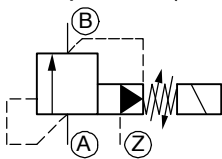


DVPA-RV-3-10...

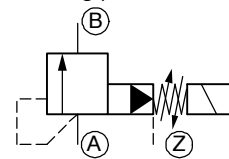


DRPA-5-10...

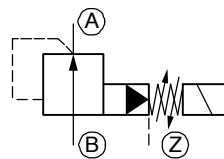
Druckpatronen (elektrisch betätigt)



WUVP...-2...DO-10...

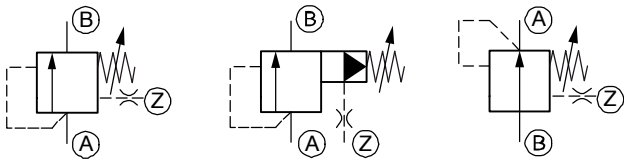


WUVP...-3...DO-10...



WDRVP...-5...DO-10...

Druckwaagepatronen (handbetätigt)

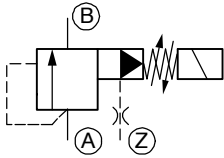


DWDPB-2D-10...

DWVPA-2-10...
DWVPZ-2-10...

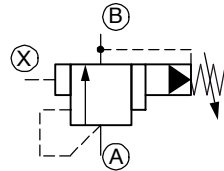
DWDPB-5D-10...

Druckwaagepatrone (elektrisch betätigt)



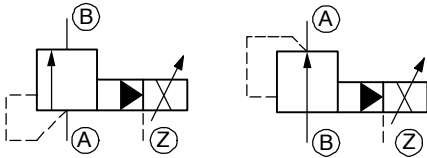
WDWVPB-2...DO-10...
WDWVPY-2...DO-10...

Druckabschaltpatrone



DWPA-2-10...
DWPAU-2-10...

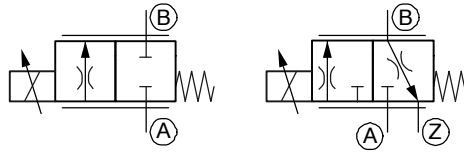
Proportional-Druckpatronen



DVPSA-3D...-10...

DRPSA-3D...-10...

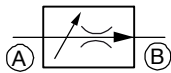
Proportional-Drosselpatronen



MDRPA-DG-10...

MDRPA-DGE-10...

Stromregelpatrone



MRP-2D-10...